



PRESS INFORMATION

NOVELTIES 2019

Ω
OMEGA



CONSTELLATION
GLOBEMASTER



CONSTELLATION GLOBEMASTER

In a year defined by colourful timepieces, the newest OMEGA Globemaster has defied the trend by going with a traditional combination of black and steel. Also famous for being the world's first Master Chronometer (a title it earned in 2015), the Globemaster continues to lead the way with the industry's finest technology.

STRENGTH AND ELEGANCE

At 41 mm, the Globemaster case in stainless steel is well-known for its classic fluted bezel – which has been crafted in the tough and scratchproof material known as tungsten carbide.

ANNUAL CALENDAR DIAL

The diamond-polished black dial is in the pie-pan style inspired by the first Constellation model from 1952. Each facet includes a month of the year, while the hands, indexes and Constellation star are in 18K white gold. There is also a date window at 6 o'clock.

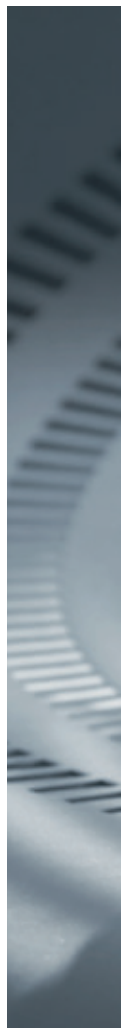
Annual Calendar

OBSERVATORY MEDALLION

On the brushed and polished caseback, you'll find the famous Constellation Observatory medallion, which has been crafted in stainless steel and set in scratch-resistant sapphire crystal.

STRAP AND MOVEMENT

The watch is presented on a glossy black leather strap and is driven by the OMEGA Co-Axial Master Chronometer Calibre 8922. The movement and the full watch have been officially certified by the Swiss Federal Institute of Metrology (METAS).





CONSTELLATION MANHATTAN



CONSTELLATION MANHATTAN

Following the new look of the modern Constellation Manhattan, OMEGA is releasing a selection of models distinguished by blue aventurine dials. This glistening form of glass is sometimes called "sang-e setareh", (sang meaning 'stone', and setareh meaning 'star' in Persian) for its starry internal reflections. A perfect reference to the Constellation's proud history of precision.

OUTWARD DESIGN

The new collection includes this 29 mm model crafted from 18K Sedna™ gold. Its design is true to the recent Manhattan makeover, including polished and beveled edges for a slimmer look, as well as a thinner bezel and refined claws that merge gracefully around the casebody.

Aventurine

AVENTURINE DIALS

Each aventurine glass dial is unique. The glass is beautifully translucent, but is brought to life by a universe of bright metal crystals suspended inside. To create this captivating effect, aventurine is formed when metal oxides are added during the glass production process.

BRACELET AND MOVEMENT

The watch is presented on an 18K Sedna™ gold bracelet with mid-bar links and is driven by the OMEGA Master Chronometer Calibre 8701 - certified by the Swiss Federal Institute of Metrology (METAS) at the industry's highest standard.



CONSTELLATION
MANHATTAN



CONSTELLATION MANHATTAN

The women's Constellation Manhattan has recently taken its next evolutionary step in design with a refined makeover that has touched upon almost every part of the iconic design. To offer even more exceptional variety and a heightened sense of elegance and finesse, four very special jewellery models have also been created, with each one containing more than one carat of gemstones.

OPAL DIALS

The timepieces have been crafted with beautiful dials made from white opal. This precious stone is often known as the "Queen of Gemstones". It is identified by its play of light and colour and has been prized since antiquity – especially amongst royalty.

Jewellery

GOLDEN DESIGN

All of the 28 mm cases and bracelets have been created in 18K Sedna™ gold. The bezels are further embellished by subtle Roman numerals that are highlighted by 154 snow-paved diamonds. On the inside, the golden cases house the OMEGA Calibre 4061.

BAGUETTE-CUT INDEXES

Each of the four models is distinguished by the precious stones that form the indexes. These are presented in either diamonds, rubies, blue sapphires or emeralds. The baguette-cut style is inspired by the Manhattan skyline, most notably the triangular facets of the Freedom Tower.

NEW BRACELETS

For the first time, the iconic mono-rang bracelets are set with 192 brilliant-cut diamonds and four Constellation "star cut" diamonds – all arranged in a shooting star pattern.



SEAMASTER AQUA TERRA



SEAMASTER AQUA TERRA

Since its first release several years ago, OMEGA's Seamaster Aqua Terra Worldtimer has enjoyed global success and popularity. The exquisite craftsmanship and attention to detail now continues in a new selection of models that embrace even more impressive technology. For fans of remarkable design, it's certainly worth touring every corner of this new creation.

AQUA TERRA STYLE

The 43 mm brushed and polished case is made from stainless steel and has now been integrated with the watch's blue rubber strap through a solid polished link. This is reminiscent of the style within OMEGA's core Aqua Terra collection.

OUTER DIAL

The sun-brushed blue dial includes the Aqua Terra's vertical teak stripes, as well as a new inner ring. The dial is surrounded by a circle of global destinations and, for a special touch,

Worldtimer

these include the city of Biene at GMT+1, OMEGA's home in Switzerland.

NIGHT AND DAY

The centre of the dial contains a 24-hour hesalite crystal ring. The light blue half indicates daytime, while the dark blue half indicates night.

PLANET EARTH

Looking down over the North Pole, OMEGA has created its vision of the Earth using a grade 5 titanium plate. This has been laser-ablated to create the blue ocean, leaving a relief of the continents. The contrasting colours of the Earth's surface are obtained naturally by the laser's chemical reaction.

MOVEMENT AND STRAP

The watch's blue rubber strap has been given a quilted texture with contrasting light blue stitching. Inside, the Worldtimer is driven by the Master Chronometer Calibre 8938.





SEAMASTER 300



SEAMASTER 300

OMEGA's Seamaster 300 is an admired and renowned watch, with a history that stretches back to 1957. The classic design has provided the perfect starting point for this year's new model in 18K yellow gold. For admirers of precious materials, it is distinguished by a malachite dial that radiates beauty.

MALACHITE

The decorative stone malachite offers a wide range of green tones, harmoniously distributed in concentric areas. It has been appreciated since antiquity and used extensively in the decoration of sacred temples, palaces and churches. For the dial of this watch, OMEGA has sourced the most captivating malachite from South Africa.

Malachite

18K YELLOW GOLD

In wonderful balance with the malachite dial, OMEGA has crafted the 41 mm case of this timepiece in 18K yellow gold. The same material is used for the faceted hands as well as the bezel – with its polished ceramic ring and OMEGA Ceragold™ diving scale.

STRAP AND MOVEMENT

The watch is presented on a green leather strap and is driven by the OMEGA Co-Axial Master Chronometer Calibre 8913. The movement and the full watch have been officially certified by the Swiss Federal Institute of Metrology (METAS).





SEAMASTER DIVER
300M



SEAMASTER DIVER 300M

The recent makeover of the iconic Seamaster Diver 300M has given the collection a dramatic new look – defined by many of OMEGA’s most modern materials and technologies. This year, a new selection of chronograph models will be released, including this model in steel, gold and ceramic.

OUTWARD DESIGN

The 44 mm chronograph is built with a stainless steel case. Its bezel is crafted from 18K Sedna™ gold with a black ceramic ring and OMEGA Ceragold™ diving scale. The conical helium escape valve and crown are also 18K Sedna™ gold, while the integrated strap is presented in black rubber.

Chronograph

THE CHRONOGRAPH DIAL

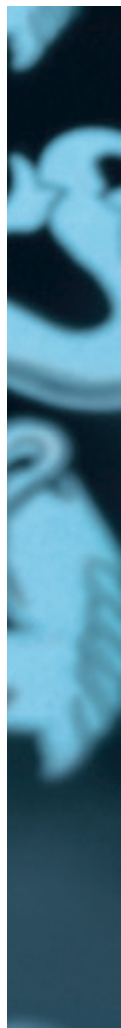
The black ceramic dial is laser-engraved with the iconic Diver 300M waves. It includes a date window at 6 o’clock, as well as raised indexes that are filled with Super-LumiNova. All hands are 18K Sedna™ gold, except for the central chronograph seconds hand which is gold coated.

CERAMIC PUSHERS

A new feature of this chronograph collection is the inclusion of ceramic pushers. The black colour of this model complements the dial and adds another sleek touch to the design.

MASTER CHRONOMETER MOVEMENT

Through the sapphire crystal, you can view the OMEGA Master Chronometer Calibre 9900 inside.





SEAMASTER DIVER
300M



SEAMASTER DIVER 300M

For fans of the traditional Seamaster Diver 300M in blue and steel, this new chronograph will be a welcome addition. As part of the new chronograph collection, it delivers a classic and popular design with stylish touches such as ceramic pushers.

CASE, BEZEL AND BRACELET

This 44 mm chronograph is built with a stainless steel case and a polished blue ceramic bezel ring with its white enamel diving scale. The polished-brushed stainless steel bracelet now features a new and improved integration with the case and includes OMEGA's patented extendable foldover rack-and-pusher with an extra diver extension.

Chronograph

THE CHRONOGRAPH DIAL

The blue ceramic dial is laser-engraved with the iconic Diver 300M waves. It includes a date window at 6 o'clock, as well as raised indexes that are filled with Super-LumiNova. All hands are rhodium-plated.

CERAMIC PUSHERS

A new feature of this chronograph collection is the inclusion of ceramic pushers. The blue colour of this model complements the dial and adds another sleek touch to the design.

MASTER CHRONOMETER MOVEMENT

Through the sapphire crystal, you can also view the OMEGA Master Chronometer Calibre 9900 inside.



SEAMASTER DIVER
300M



SEAMASTER DIVER 300M

This eye-catching Seamaster has achieved its own individual personality thanks to a dark laser-ablated bezel and golden-ringed subdials. The result is a watch like no other in the Diver 300M collection. Not only is it edgy and bold, but it delivers a full hit of material and technical excellence.

A BEZEL IN BLACK

Set on the watch's 44 mm 18K Sedna™ gold case is a laser-ablated black ceramic bezel ring with a polished diving scale. The uni-directional design is contrasted only by a single dot of white Super-LumiNova at 12 o'clock.

GOLDEN SUBDIALS

The black ceramic dial is laser-engraved with the iconic Diver 300M waves in positive relief. Most distinctive are the 18K Sedna™ gold rings that surround the subdials. As well as having a date window at

Chronograph Sedna™ Gold

6 o'clock, all hands and indexes are 18K Sedna™ gold, except for the central chronograph seconds hand which is gold coated.

CERAMIC PUSHERS

A new feature of this chronograph collection is the inclusion of ceramic pushers. The black colour of this model complements the dial and adds another sleek touch to the design.

MASTER CHRONOMETER MOVEMENT

Presented on a rubber strap, the watch features a screw-in caseback with scratch-resistant sapphire crystal. Through the glass, you can see the OMEGA Co-Axial Master Chronometer Calibre 9901 inside – with its special luxury finish of a rotor and balance bridge in 18K Sedna™ gold.





SEAMASTER DIVER
300M



SEAMASTER DIVER 300M

In 2019, the evolution of the Seamaster Diver 300M has continued with a bold new model built from black ceramic and titanium. This edgy combination delivers good looks as well as strength, and certainly adds an exciting new choice within the range.

CERAMIC, TITANIUM AND ENAMEL

Sized at 43.5 mm, the watch is distinguished by its polished/brushed black ceramic case and grade 5 titanium caseback. The bezel is also formed with a grade 5 titanium base and includes a black ceramic ring with a diving scale in white enamel.

RISING WAVES

On the brushed black ceramic dial, OMEGA has laser-engraved the Diver 300M's famous waves. Unlike the core collection, however, these waves are raised from the surface in a "positive relief" to create a unique effect. Also on the dial are

Ceramic and Titanium

PVD titanium hands and indexes, which are all filled with white Super-LumiNova.

CASEBACK AND MOVEMENT

Turning the watch over reveals the wave-edged titanium caseback, which is designed with OMEGA's NAIAD LOCK system to keep all wording in perfect position. Through the caseback's sapphire crystal, you'll find the OMEGA Master Chronometer Calibre 8806, tested and certified by METAS at the industry's highest standard of precision, performance and magnetic resistance.

AROUND THE WRIST

This new model is presented on an integrated black rubber strap with a buckle in black ceramic. A black and grey striped NATO strap is also available.





SEAMASTER DIVER
300M



00:31

SEAMASTER DIVER 300M

Continuing last year's progression of the new-look Seamaster Diver 300M, OMEGA is introducing this stunning model in blue and gold. All of the collection's iconic features are included, such as the famous waved dial and helium escape valve.

CASE AND STRAP

The new attribute is a 42 mm case that has been fully crafted from 18K Sedna™ gold. It includes a polished blue ceramic bezel with an OMEGA Ceragold™ diving scale. Beautifully integrated with the case is a blue rubber strap with a buckle in 18K Sedna™ gold.

Sedna™ Gold

CERAMIC DIAL

Polished blue ceramic [ZrO₂] is used yet again for the dial, which features laser-engraved waves and a date window at 6 o'clock. The skeleton hands and raised indexes are 18K Sedna™ gold and are filled with white Super-LumiNova.

MASTER CHRONOMETER MOVEMENT

Behind the sapphire crystal on the caseback, you'll find the OMEGA Co-Axial Master Chronometer Calibre 8801 – with its special luxury finish of a rotor and balance bridge in 18K Sedna™ gold.



SEAMASTER DIVER
300M



SEAMASTER DIVER 300M

Amongst the many choices of Seamaster Diver 300M, customers can now choose this model with a new white ceramic [ZrO₂] dial. The colour works perfectly with the surrounding black bezel and stainless steel case.

WHITE CERAMIC DIAL

To give the new ceramic white dial extra depth, OMEGA has included laser-engraved waves, a date window at 6 o'clock and the famous Seamaster name highlighted in red. Blackened hands and indexes complete the design and are filled with white Super-LumiNova.

CASE AND BRACELET

The 42 mm case is in stainless steel and is mounted with a black ceramic bezel ring filled with a white enamel diving scale. Stainless steel is also used for the polished-brushed bracelet that is seamlessly integrated with the case. There is also OMEGA's patented extendable foldover rack-and-pusher with an extra diver extension.

MASTER CHRONOMETER MOVEMENT

Behind the sapphire crystal on the caseback, you'll find the OMEGA Co-Axial Master Chronometer Calibre 8800 - which has been officially certified by the Swiss Federal Institute of Metrology (METAS).



SEAMASTER
PLANET OCEAN



SEAMASTER PLANET OCEAN

The material titanium has enjoyed an important part in OMEGA's history of diving watches. This year, it has been integrated into one of the brand's classic underwater timepieces. At first glance, it is clear that this new Seamaster Planet Ocean offers the ultimate blend of innovation and style.

CERAMISED TITANIUM DIAL

The new chronograph in the Seamaster Planet Ocean collection truly stands out thanks to its ceramised titanium dial. Its captivating effect is further accentuated by rhodium-plated hands and indexes, as well as orange touches such as the varnished hand on the 3 o'clock subdial, the applied number 12 and the tip of the central seconds hand.

Chronograph

PLANET OCEAN CASE

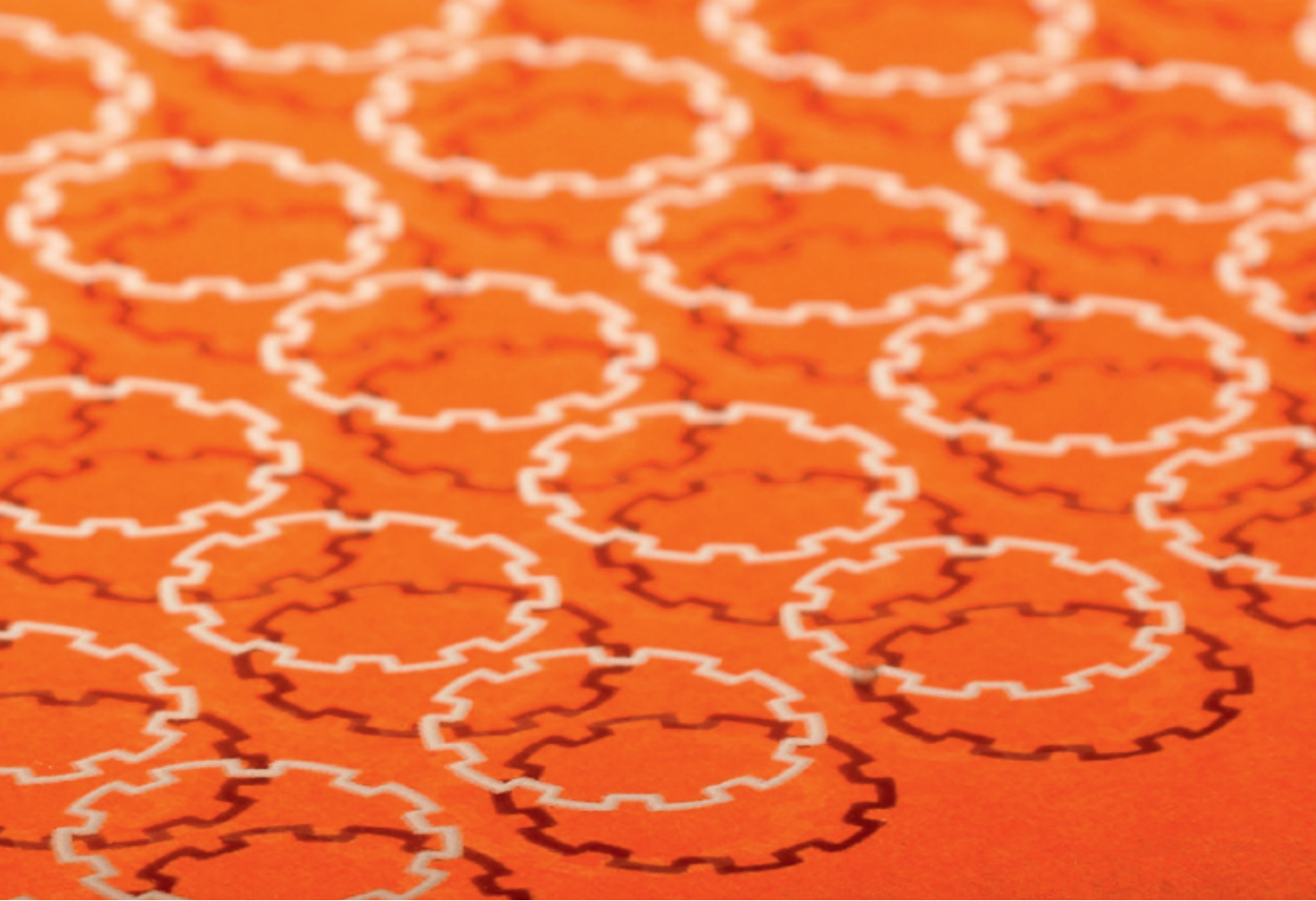
Sized at 45.50 mm, the stainless steel case includes a new orange ceramic [ZrO₂] bezel ring (new process patent pending) with a diving scale filled with white liquid ceramic and Super-LumiNova. The pushers are also given a touch of colour thanks to their polished ceramic rings.

FIVE-STRIPE STRAP

To make an impression around the wrist, OMEGA has presented this timepiece on a 5-stripe orange, grey and white polyamide NATO strap. The design includes a buckle and strap keepers in polished stainless steel.

MOVEMENT

Through the sapphire crystal case-back, wearers can view the OMEGA Co-Axial Master Chronometer Calibre 9900. The movement and the full watch have been officially certified by the Swiss Federal Institute of Metrology (METAS).



SEAMASTER
PLANET OCEAN



00:40

SEAMASTER PLANET OCEAN

When the original Seamaster Planet Ocean was launched in 2005, it arrived with a distinctive bezel and strap in bright orange. While the collection has evolved ever since then, OMEGA has now gone back to the start, with a new model that reprises that classic orange look.

CASE AND INTEGRATED BRACELET

The timepiece begins with a 43.50 mm case in stainless steel. This is the same material used for the fully-brushed bracelet that is seamlessly integrated with the case. There is also OMEGA's patented extendable foldover rack-and-pusher with an extra diver extension.

ORANGE AND WHITE

The Planet Ocean's original orange colour is brought to life on the new orange ceramic [ZrO₂] bezel ring (new process patent pending). This

is further embellished by a diving scale filled with liquid ceramic and Super-LumiNova. The polished dial is in white ceramic [ZrO₂] and includes applied Arabic numerals in varnished orange.

SMALL TOUCHES

Subtle details that shouldn't escape your attention include the date-window at 3 o'clock, the rhodium-plated hands with white Super-LumiNova, and the orange-tipped central seconds hand.

MOVEMENT

Through the sapphire crystal case-back, wearers can view the OMEGA Co-Axial Master Chronometer Calibre 8900. The movement and the full watch have been officially certified by the Swiss Federal Institute of Metrology (METAS).



SPEEDMASTER
MOONPHASE



SPEEDMASTER MOONPHASE

With OMEGA's special connection to the lunar surface, the brand is perfectly positioned to create the world's most distinguished Moonphase models. While an incredible collection has already been established in recent years, a new model has now risen in platinum-gold that is sure to shine bright.

MATERIAL MATTERS

With the use of platinum-gold (Pt950Au20), this Moonphase model has been built to impress. The material is used for the brushed and polished 44.25 mm case, as well as the sand-blasted dial and clasp of the blue leather strap.

CERAMIC, DIAMONDS AND GOLD

Other materials on this watch make a distinctive impact too. The bezel ring is made from polished blue ceramic [ZrO₂] and includes

Platinum-Gold

a brushed platinum Liquidmetal™ tachymeter scale. As well as having blackened hands, the dial features 18K white gold index holders that are each set with baguette-cut diamonds.

THE MOONPHASE DISC

To precisely track the lunar cycle, OMEGA has created a blue ceramic disc with two moons made from platinum Liquidmetal™.

MOVEMENT

Through the sapphire crystal caseback, wearers can view the OMEGA Co-Axial Master Chronometer Calibre 9905. As well as being officially certified by the Swiss Federal Institute of Metrology (METAS), the movement includes a special luxury finish with 18K Sedna™ gold used for the rotor and balance bridge.



SPEEDMASTER
APOLLO 11



SPEEDMASTER APOLLO 11

Marking the golden anniversary of the first moon landing, OMEGA has produced a new Limited Edition Speedmaster of 1,014 pieces. The chronograph has been crafted from an exclusive new 18K alloy, while the design is reminiscent of the famous Speedmaster BA 145.022 that was produced in 1969 to celebrate Apollo 11.

INSPIRATION

In 1969, OMEGA produced a special Speedmaster collection to celebrate the success of history's first moon landing. Created in 18K yellow gold with rare burgundy bezels, only 1,014 of these BA 145.022 models were produced from 1969 to 1973. Model numbers 3 - 28 were given to NASA astronauts, including 19 of those who attended a memorable "Astronaut Appreciation Dinner", hosted by OMEGA in Houston in November 1969. The public were given the opportunity to purchase

50TH Anniversary
Limited Edition Moonshine™ Gold

model numbers 33 - 1000 and each one remains hugely sought-after even today.

18K MOONSHINE™ GOLD

To recreate the famous BA 145.022, the case, bracelet, dial, hour-markers and hour-minute hands of this new Limited Edition have all been created in 18K Moonshine™ Gold - a unique new alloy whose colour is inspired by the shining moonlight in a dark blue sky. In a paler hue than traditional 18K yellow gold, Moonshine™ Gold offers high resistance to the fading of colour and lustre over time.

CASE AND BRACELET

The polished and brushed 42 mm case of this timepiece features the asymmetrical casebands and twisted lugs of the 4th generation Speedmaster. The brushed-polished bracelet bears the five-arched-links-per-row design and a grooved clasp with an applied vintage Ω.

BURGUNDY CERAMIC BEZEL

Remaining true to the historical piece of 1969, OMEGA has included a burgundy bezel ring – this time in ceramic [ZrO₂] according to a special patent pending process, with its tachymeter scale in OMEGA Ceragold™. Following the first generation of the Speedmaster tachymeter scale, which was graduated to 500, this new model features a marker dot above 90 (also known as “Dot Over 90” or “DON”).

ONYX AND BLACK

The vertically brushed dial is marked “Au750” as well as OM (“Or Massif” in French) for the use of solid gold and is enhanced by the faceted black onyx indexes set in the polished hour-markers, as well as the hour-minute hands filled with black varnish and the black varnished central chronograph seconds and subdial hands.

THE UNIQUE CASEBACK

The outer caseback ring features mechanically engraved markings: “1969-2019” and the Limited Edition number highlighted in

burgundy, as well as an uncoloured “Master Chronometer”. The inner decorative ring, also created in 18K Moonshine™ Gold, has undergone laser ablation processes, as well as PVD (Physical Vapour Deposition) colour treatments in blue and black. This has produced the following exquisite results:

- a matte-finish blue ocean that surrounds a partial world map of the American continents (in polished finish), with a glimpse over the rocket’s lift-off site Cape Canaveral (known as Cape Kennedy from 1963 – 1973).
- a matte-finish black background which accentuates polished markings including, “APOLLO 11 – 50th ANNIVERSARY” and “THE FIRST WATCH WORN ON THE MOON”.

Finally, a domed lunar meteorite inlay representing the Moon has been delicately set into the cavity of the ring. Interestingly, the Earth and the Moon on the inner ring have been produced in true proportion (3.67 : 1 in diameter).

00:48

MOONWATCH MOVEMENT

The new OMEGA Master Co-Axial Calibre 3861 takes the next evolutionary step for the famous Moonwatch movement. Now crafted with Co-Axial technology, a stop-second function and OMEGA's superior anti-magnetic innovation, the Speedmaster Moonwatch now reaches the Master Chronometer standard, which assures the industry's highest standard of precision, chronometric performance and magnetic resistance.

CRATER BOX

Inspired by the original packaging of the BA145.022 model, OMEGA has created a new crater box that will house each Limited Edition timepiece. The panels of the box are in ceramic with 3D printing of the lunar surface. Since every panel is structured differently, no crater box will be alike. Furthermore, the top panel of every box is printed with the image of the Sea of Tranquility and the landing position of Apollo 11.



SPEEDMASTER
APOLLO 11



SPEEDMASTER APOLLO 11

On the 21st of July 1969, Neil Armstrong and Buzz Aldrin stepped off the Eagle to become the first humans to stand on another world. It was during this legendary mission that the OMEGA Speedmaster became the first watch worn on the moon. To commemorate that moment and the 50th anniversary of Apollo 11, OMEGA has crafted a new Limited Edition of 6,969 pieces inspired by those first historic steps.

NEW MATERIAL

While the 42 mm case has been created in stainless steel, the bezel of this timepiece is made from polished 18K Moonshine™ Gold – an exclusive new patent-pending alloy which is a paler hue than traditional yellow gold and offers high resistance to fading over time. The bezel ring itself is polished black ceramic [ZrO₂] with an OMEGA Ceragold™ tachymeter scale.

50TH Anniversary Limited Edition

LANDING ON THE DIAL

Two distinct zones make up the dial, including a central varnished grey zone and an outer blackened sector. 18K Moonshine™ Gold is used for the bevelled indexes, vintage OMEGA logo and all of the hands – except for the central chronograph seconds hand, which is “PVD-treated” in Moonshine™ Gold.

UNIQUE TOUCHES

11 o'clock features two “1” markings in 18K Moonshine™ Gold, forming the Apollo mission's number. More notably, the 9 o'clock subdial features the famous image of Buzz Aldrin climbing down the ladder onto the lunar surface. This subdial is crafted from 18K Moonshine™ Gold and is blackened and laser-engraved.



00:52

THE CASEBACK

Featured on the blackened decorative inner caseback is a laser-engraved footprint representing humankind's first step on the moon. Encircling the image in 18K Moonshine™ Gold-plated lettering is Neil Armstrong's legendary quote: "THAT'S ONE SMALL STEP FOR A MAN, ONE GIANT LEAP FOR MANKIND". Orbiting the caseback's sapphire crystal are engraved words highlighted in black including APOLLO 11, 50th ANNIVERSARY, LIMITED EDITION, and each Limited Edition number. Also engraved, yet blending in with the steel, are NAIAD LOCK, Cal. 3861 and CO-AXIAL MASTER CHRONOMETER.

BRACELETS

The watch is presented on a polished-brushed metallic bracelet with a vintage Ω on the clasp: a design inspired by the bracelet of the 4th generation Speedmaster (ST 105.012-65). An additional Velcro strap in blackened cork with golden marks is also included. This innovative design is a salute to the Apollo-era "boost protective cover" - a fiberglass structure covered with thick cork ablator which fitted over the Command Module like a glove, keeping the crew of the Saturn V rocket safe from the intense heat produced at launch.



00:53

MOONWATCH MOVEMENT

The brand new OMEGA Co-Axial Master Chronometer Calibre 3861 takes the next evolutionary step for the famous Moonwatch movement. Now crafted with Co-Axial technology, a stop-second function and OMEGA's superior anti-magnetic innovation, the Speedmaster Moonwatch has now been able to reach the Master Chronometer standard, which assures the industry's highest standard of precision, chronometric performance and magnetic resistance.

PRESENTATION BOX

The NASA-style presentation box includes two mission patches (50th anniversary / Apollo 11), two engraved plates (landing site coordinates / landing site and time) as well as the spare strap and strap changing tool. Best of all, it houses the ultimate display stand - a Lunar Module.





DE VILLE TRÉSOR



DE VILLE TRÉSOR

Continuing the transformation of the Trésor line, OMEGA is presenting unique new models with golden cases and enamel dials. The blend of extraordinary materials and complex watchmaking techniques ensures that each piece has its own identity and spirit of distinction. They are the ultimate pieces for men of business as well as style.

GOLD ON GREY

This 18K Sedna™ gold model has been built with a polished 40 mm case that is presented on a grey leather strap.

ENAMEL DIAL

The watch's domed grey dial is made from enamel using the "Grand Feu" technique and includes polished hands and domed indexes all in 18K Sedna™ gold. The logo and wording on the dial are enamel prints achieved through a "Petit Feu" technique.

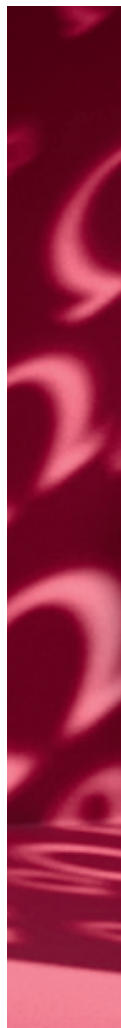
Sedna™ Gold

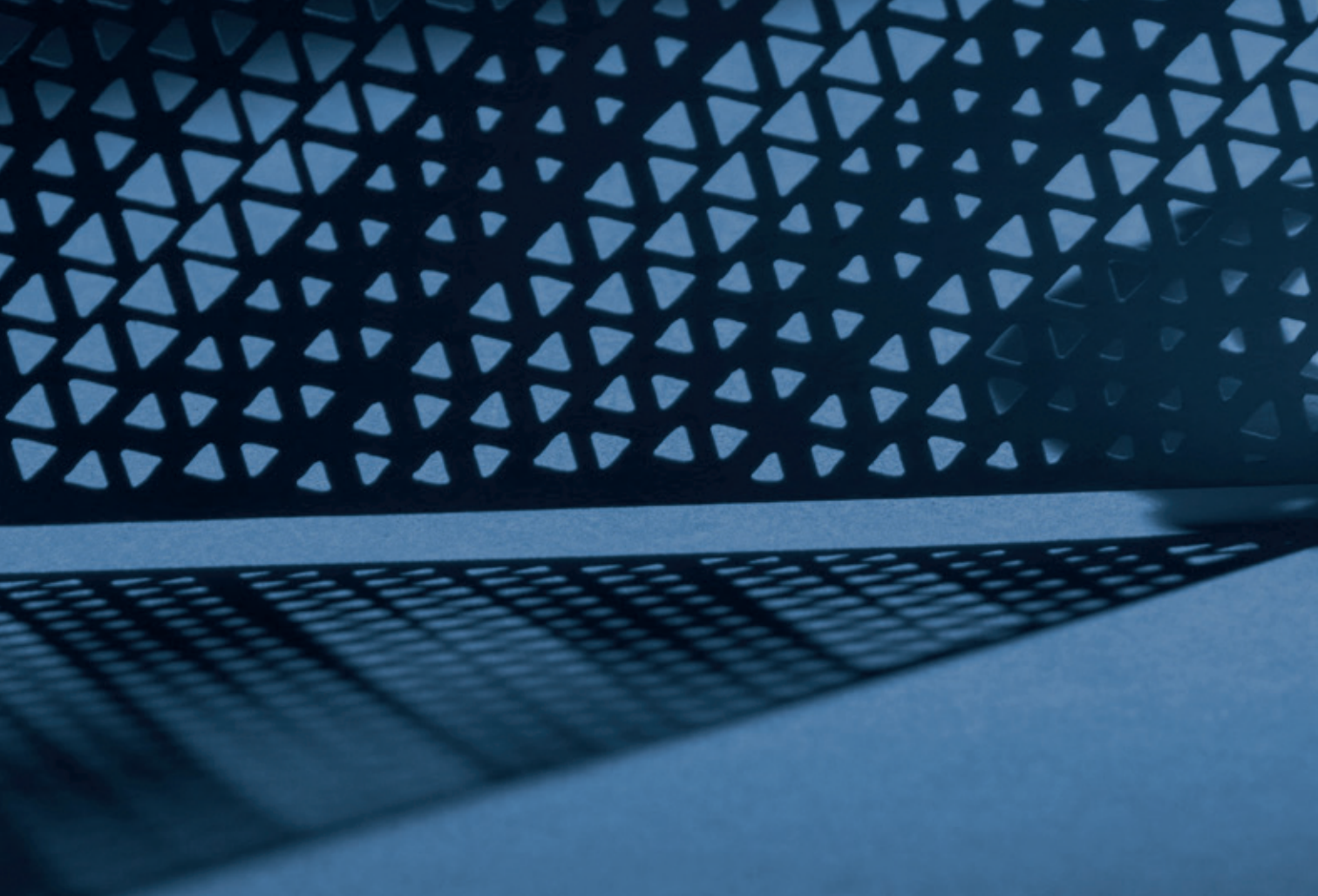
GRAND FEU

"Grand Feu" which translates as "Great Fire" is a decorative technique particular to watchmaking. It requires great skill, as patterns are not painted on, but created by meticulously applying oxides to the dial. The watchmaker then fires the dial at high temperatures until the patterns appear. As the new gold model shows - the results are highly refined.

MASTER CHRONOMETER MOVEMENTS

Blending tradition and modernity, OMEGA has introduced manual-winding Master Chronometer certified movements into this collection. This model is driven by the OMEGA Master Co-Axial Calibre 8929 (a special luxury finish with an 18K Sedna™ gold balance bridge). To become a Master Chronometer, the movement and the watch have reached the industry's highest standard of precision, chronometric performance and magnetic resistance - as approved by the Swiss Federal Institute of Metrology (METAS).





DE VILLE TRÉSOR



00:59

DE VILLE TRÉSOR

The slim and elegant Trésor line was first launched by OMEGA in 1949 and was defined by its legendary 30 mm Calibre. 70 years later, the classic gents' timepiece continues to impress and is once again breaking new ground with a manual-winding Master Chronometer movement, as well as distinguished touches of modern style.

CASE AND STRAP

Presented on a blue leather strap, the first model in the new collection features a 40 mm polished case that has been crafted in stainless case. Scratch-resistant sapphire crystal is used on both sides.

BLUE DIAL

As well as including a date window at 6 o'clock, the domed blue dial has been given a brass-stamped pattern and is further distinguished by polished hands and domed indexes all in 18K white gold.

MASTER CHRONOMETER MOVEMENTS

Blending tradition and modernity, OMEGA has introduced manual-winding Master Chronometer certified movements into this collection. This model is driven by the OMEGA Master Co-Axial Calibre 8910. To become a Master Chronometer, the movement and the watch have reached the industry's highest standard of precision, chronometric performance and magnetic resistance - as approved by the Swiss Federal Institute of Metrology (METAS).





DE VILLE TRÉSOR



DE VILLE TRÉSOR

 MEGA's new 18K Moonshine™ gold is already making a bold impact in the brand's universe of space-inspired watches. Now, the unique alloy has found its place in the Trésor collection for women. In this new model, the pale yellow of the gold combines beautifully with a shimmering design in red.

MOONSHINE™ GOLD CASE

The new timepiece includes a polished 36 mm case crafted in 18K Moonshine™ gold - a paler hue than traditional yellow gold and with a high resistance to the fading of colour and lustre over time. The sides of the case are paved with 38 single-cut diamonds in total. An additional diamond is placed on the crown amidst an OMEGA flower made of red liquid ceramic.

Moonshine™ Gold

LACQUER AND LEATHER

In perfect balance with the 18K Moonshine™ gold hands is a gradient red garnet dial that has been coated with translucent lacquer for extra gloss. The red garnet leather strap also includes a buckle in 18K Moonshine™ gold.

CASEBACK AND MOVEMENT

Turning the watch over, the OMEGA Calibre 4061 sits just behind a polished mirror caseback that is embellished by a metalized "Her Time" pattern.

A close-up photograph of a red fabric, possibly silk or satin, with a subtle sheen and visible folds and creases. The color is a rich, slightly dark red. The fabric occupies the top two-thirds of the image.

DE VILLE TRÉSOR



DE VILLE TRÉSOR

In the past year, OMEGA's historic reputation for luxurious women's watchmaking has been elevated even further – particularly thanks to the arrival of the Trésor collection. This year, a new selection of styles will be unveiled, including one unique model in red and white.

DIAMOND-PAVED CASE

The new timepiece includes a polished 36 mm case crafted in stainless steel. Following the well-known Trésor style, the case is also set with 38 single-cut diamonds, which curve elegantly along each side.

RED ON RED

Perhaps most distinctive is the new combination of colours. The lacquered white dial is surrounded by transferred Roman numerals in red, while the matching strap truly stands out in red leather. On the crown, you'll find another single diamond, this time surrounded by a red liquid ceramic flower made from five OMEGA logos.

CASEBACK AND MOVEMENT

Turning the watch over, the OMEGA Calibre 4061 sits just behind a polished mirror caseback that is embellished by a metalized "Her Time" pattern.



FOR FURTHER INFORMATION, PLEASE CONTACT:

OMEGA International Press Office • Rue Jakob-Stämpfli 96 • 2500 Bienne 4 • Switzerland

Tel. +41 32 343 9211 • Fax +41 32 343 9715

press@omega.ch • www.omegawatches.com

OMEGA is a company of the Swatch Group, the largest manufacturer
and distributor of watches and jewellery in the world.